



Details

6 weeks – end Term 1, hols, start Term 2.

Approx 2 weeks travelling – Qingdao, Chongqing, Beijing, Xian, Shanghai

Rest of time in schools.

- Control classes
- Homestays
- Living in school dormitories
- Day excursions
- Work on projects
- Journal writing
- Year 9 Semester 1

Costs

\$2000 full fee

\$800 Health Care Card or Pension Card – CSEF of \$225, \$575 remaining.

Payment Plans available – must be paid before we leave

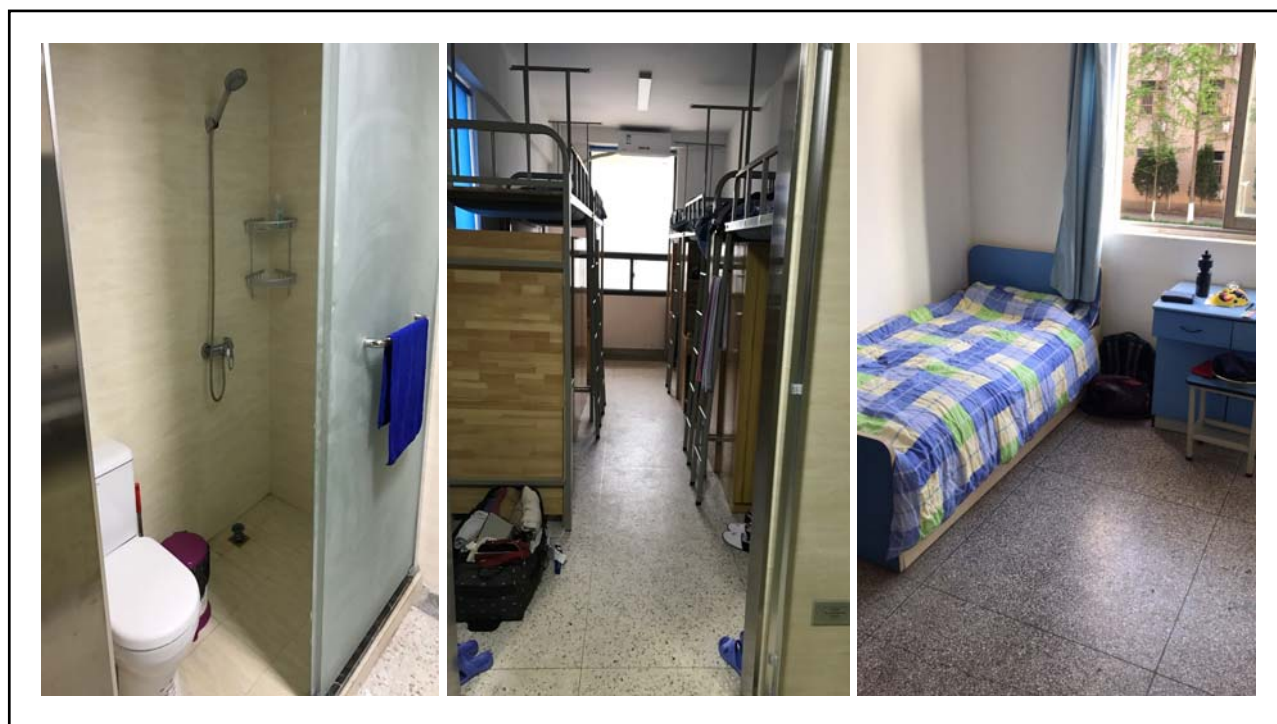
Passport - \$148 for Child 5 year validity - <https://www.passports.gov.au/>

Spending money - \$500 max





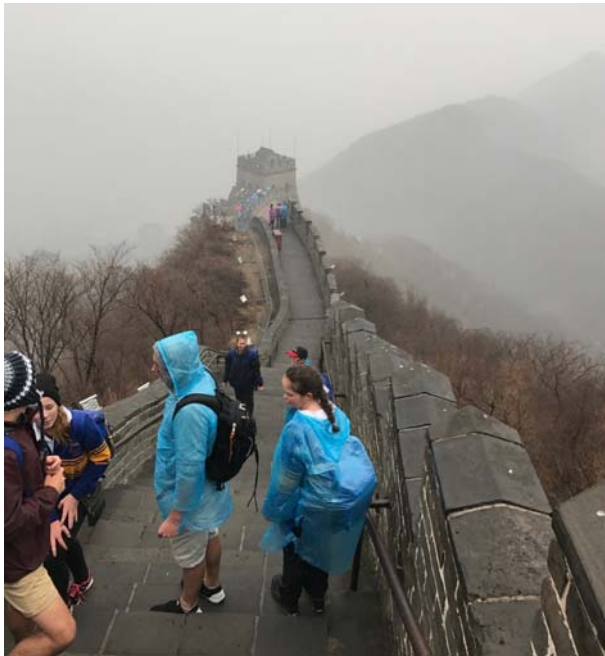




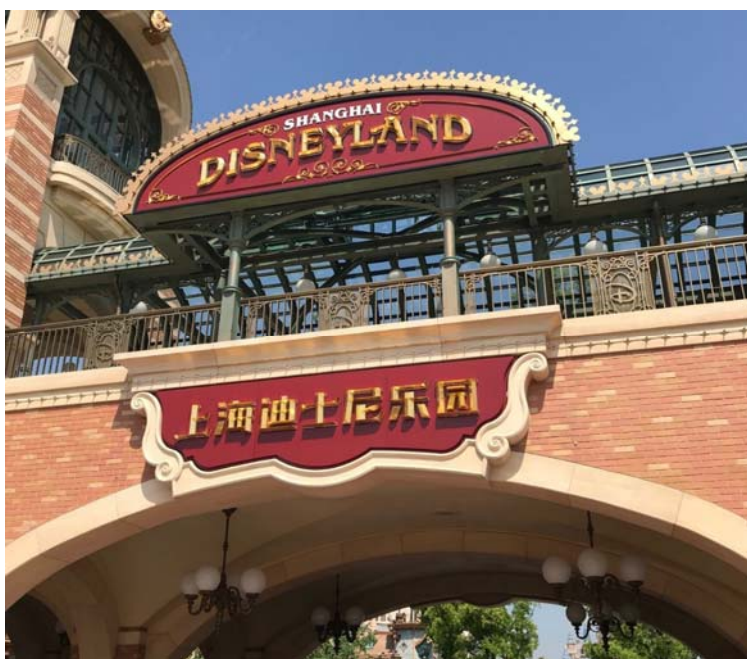














Phones and Devices

- You can bring them.
- Hand them in at 9pm every night.
- Wi-fi available at schools and many other places.
- Facebook, Snapchat, Instagram etc blocked in China.
- Phones could be taken for a few days or more.



Communication With Home – via WeChat



Benefits



Facing and overcoming challenges



Increased confidence



Increased independence



Increased Language skills



Experiencing a different culture



Travel – itchy feet!



Leadership skills – encourager, organiser, performer, traveller etc

Common Concerns

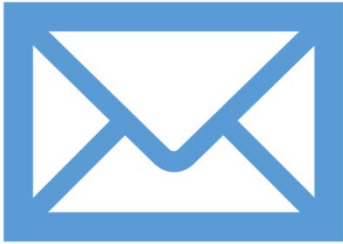
- Being homesick
- Missing sports or other commitments
- Anxieties / mental health
- Worries about food
- Worries about missing sport season
- Allergies – anaphylaxis, dietary requirements
- Sickness & hospital – bring own common medicines, hospital = GP

ALL HAVE BEEN OVERCOME!



What advice
do you have
for students
considering the
trip but might
be feeling
nervous about
it?





Email

We use email to
communicate
EVERYTHING about the
trip.

PLEASE check your email
regularly.

Application Process



Fill out form



Interview a past participant



Principal interview?



Submit by due date (No one is going to
chase you)

